

"AMBER DAWN" OCEAN 30



"AMBER DAWN" OCEAN 30

"AMBER DAWN" has been much loved by her present owner and maintained to a high standard. She features twin Mercedes OM636 engines which have recently undergone a full service. The domestic batteries have just been replaced and is ready for many happy hours cruising this season.



Boat Details

Boat Name: "Amber Dawn"
Builder: Broom
Length: 30ft
Location: Cambridgeshire
Engine: 2x Mercedes OM636

PRICE £17995 ONO

+447736 770 777

jamie@boatserv.co.uk

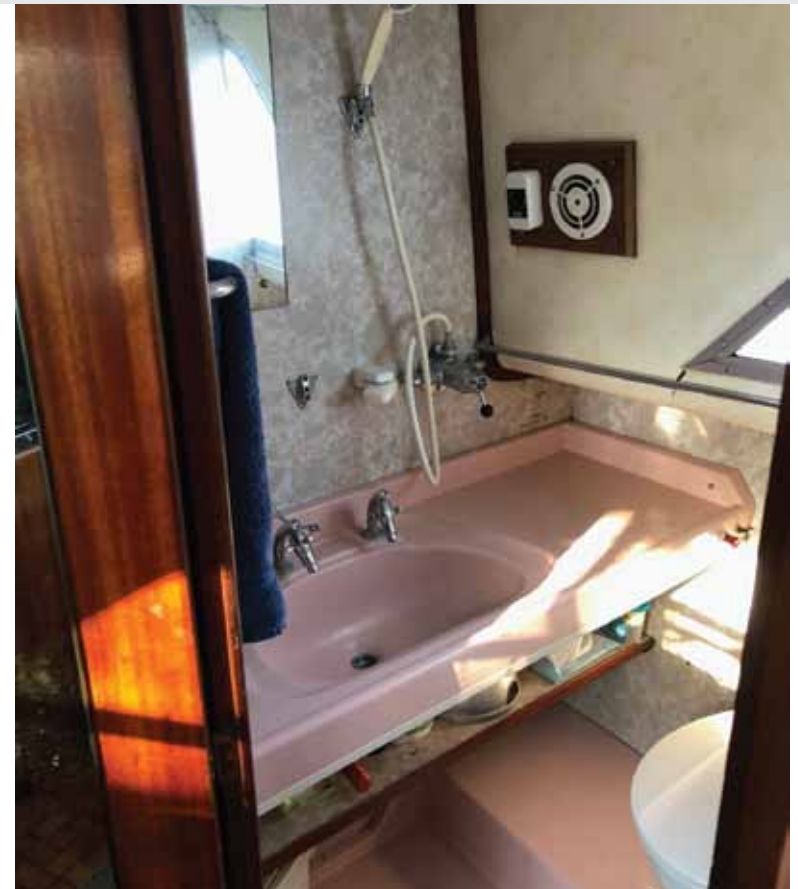
"AMBER DAWN" OCEAN 30



"AMBER DAWN" OCEAN 30



"AMBER DAWN" OCEAN 30



"AMBER DAWN" OCEAN 30



"AMBER DAWN" OCEAN 30



SPECIFICATIONS

Engines: 2 x Mercedes OM636

Electrical System: 240v Shore power supply and 12v Charger

Water Tank

Twin Diesel Tanks

Storage Throughout

Brokers Comments:

An excellent example of the ever so popular Ocean 30. "AMBER DAWN " represents excellent value for money with her fresh interior upholstery and gleaming woodwork. New to the market representing excellent value.

Equipment

Conventional shaft drive

Single lever controls

2 x rev counters

2 x 12 temperature gauges

Oil pressure gauges for engines and gearbox

2 x Ammeters

Helm indicator

4 x 12 volt batteries

Webasto Hot air heating

Calorifier

Water Tank

Sea water toilette

Fresh water system